

Committee(s):	Date(s):
Health Scrutiny Committee	20 November 2012
Subject: Substance Misuse Partnership	Public
Report of: Director of Community and Children's Services	For Information
<p><u>Summary</u></p> <p>On 12 November 2012 the Substance Misuse Partnership (SMP) moved from the Town Clerk's Department to the Department of Community and Children's Services (DCCS). The SMP will initially form part of the People's Directorate and there will be no change to its structure or function. However, this will be reviewed as part of the Commissioning and Partnerships Division consultation to ensure it is more closely aligned with the priorities of the Health and Wellbeing Board. It is envisaged that any further changes will be implemented from April 2013 as part of the review of Commissioning and Partnerships which is currently underway.</p> <p>The SMP covers a wide range of services and issues regarding substance misuse that are cross-cutting and this is reflected in the breadth of representation on both the strategic and operational groups. The partnership with DCCS has always been a particularly important link and it is hoped that the move of the SMP will strengthen these further to enable the City of London to more effectively address Public Health and Wellbeing.</p> <p>Recommendations</p> <ul style="list-style-type: none"> • Members are asked to note this report 	

Main Report

Background

1. The City of London Substance Misuse Partnership (CoL SMP) is a multi-agency partnership tasked with implementing national drug and alcohol strategies at a local level. The work of the partnership covers:
 - Interventions to disrupt the supply of illegal drugs – this is led by the City of London Police.
 - Treatment – The partnership is responsible for the commissioning of drug and alcohol treatment for City residents.
 - The cross cutting agenda – Drugs and alcohol cut across a wide range of agendas such as the night-time economy, housing, training & employment, criminal justice and public health. The partnership brings these agendas together to help co-ordinate a consistent approach

within the City by coordinating approaches of colleagues from Partnership.

- Children, young people and families – to help ensure that the relevant organisations are taking full account of substance misuse issues in their strategies, planning and service delivery.
 - Community Liaison – the Partnership works with communities and families experiencing problems with drugs.
2. Because of the nature of the City with its small number of residents and large daytime population the SMP also covers substance misuse issues which affect businesses and their employees. Resources are limited, so the SMP have been restricted in the amount of work they have been able to do with City businesses; but this is an area for future development depending on the levels of public health funding allocated to the City.

Staffing

3. The SMP is supported by a small support team which consists of the Substance Misuse Manager, a Development Officer and an Administrative Support Officer. This team co-ordinates the partnership, manages meetings, carries out research, writes plans and strategies, represents the Partnership at a variety of meetings and manages the Arrest Referral and Outreach Team of substance misuse workers.
4. The Arrest Referral and Outreach Team provide services directly to residents, workers and visitors to the City of London. The team consists of; a Senior Arrest Referral Worker, a Restrictions on Bail/Arrest Referral Worker and an Outreach/Arrest Referral Worker. This team provide a range of services within the criminal justice system including: triage assessment, harm minimisation, advice, signposting, and utilisation of a range of tools such as motivational interviewing and brief interventions, to help people think differently about their substance misuse (including alcohol, illegal drugs, prescribed medication and tobacco). In addition to this, the team also provide client support to improve their overall health and wellbeing.
5. In addition to the staff who are directly employed, the SMP also commission a Care Manager who sits within the Adult's Social Care team and a Specialist Substance Misuse Nurse who is part of the NHS. The Substance Misuse Manager also works in collaboration with NHS East London and the City to commission the Specialist Addiction Unit (drugs) and the Grove Alcohol Recovery Centre.

Governance

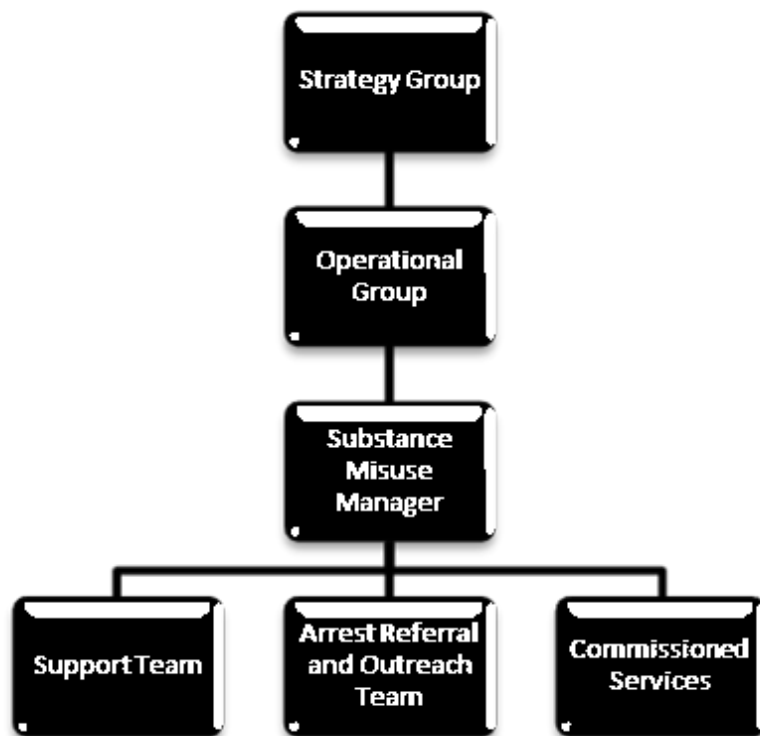
6. The Partnership is currently a stand-alone organisation in terms of governance in that it doesn't fully fit into the structures of any of its partners. The support team are hosted by the CoLC so procurement and HR are governed by this organisation. The work of the partnership is monitored by the National Treatment Agency for Substance Misuse (NTA). From April 2012 the NTA's responsibilities will be transferred to Public Health England.
7. The partnership is governed by two boards; the decision-making board is called the Strategy Group. This group has responsibility for deciding on the strategic direction of the Partnership and high level monitoring of activity. This group meets twice a year. The group passes actions down to the Operational Group who decide how to take forward the actions and have responsibility for detailed performance monitoring. This group meets four times a year.
8. Memberships of the boards:

Strategy Group

- Department of Community and Children's Services (CoLC)
- City of London Police
- East London NHS Foundation Trust
- NHS East London and the City
- London Probation Trust
- London Drug and Alcohol Policy Forum
- Economic Development Office (CoLC)

Operational Group

- Adult Services (DCCS, CoLC)
- Children's Services (DCCS, CoLC)
- Homelessness and Housing Options (DCCS, CoLC)
- Commissioning (DCCS, CoLC)
- Housing (DCCS, CoLC)
- Safer City Partnership (CoLC)
- Economic Development (CoLC)
- NHS East London and the City
- City of London Police
- London Probation Trust



9. There are no formal targets set by external agencies so it is up to the Partnership to decide how services should be monitored and what the expected performance level is. Currently the partnership closely monitors successful completions from drug treatment as this measure directly relates to the levels of funding received.

Current Position

10. The overarching priority is: make the most of the synergies with the public health agenda, and to exploit the potential for greater collaboration with the Corporation's Health and Wellbeing function.
11. This priority is supported by four more specific priorities:
 - Develop a needs assessment process to inform design of future service provision
 - Sustain and develop a good quality substance misuse service for the resident population
 - Develop a wider service approach to both the daytime and night-time populations
 - Seek to inform the commissioning decisions of the corporate sector in the City.

Funding

12. The SMP is currently funded via several streams as detailed below. However, from April 2013 the SMP will no longer receive this funding directly, but it will form part of the Public Health funding allocation to

the City of London. This is with the exception of one-third of the Drug Interventions Programme Grant which will be allocated to the Police Committee.

Pooled Treatment Budget: This funds community drug treatment and drug detox places. The majority is spent on the Clinical Nurse Specialist for Substance Misuse.

Drug Interventions Programme Grant: This budget is to support the running of the Drug Intervention Programme within the City. The grant covers the salaries of the three arrest referral workers, the Development Officer and the Administrative Support Officer.

Care Manager Grant: This grant is specifically to contribute to the cost of the Care Manager for Substance Misuse post.

Alcohol Treatment: This grant funds alcohol detox placements and other client related costs such as, training, education and contingency management.

Partnership Support Grant: This grant is held by the Safer City Partnership and is a contribution to the cost of the Substance Misuse Manager post.

Young People's Pooled Treatment Budget: This grant is held to cover the cost of drug treatment for young people.

13. NHS East London and the City directly commission the Specialist Addiction Unit (for drug treatment) and The Grove Alcohol Recovery Centre. Both services are available to residents of Hackney and The City.

Options

14. In order to integrate the work of the partnership and the team more closely with the Public Health Agenda, Officers are currently considering the structure of the team and the services it commissions as part of the review of Commissioning and Partnerships that is taking place in the Department of Community and Children's Services.
15. When that is complete a further report will be prepared for the Health and Wellbeing Board, Safer City Partnership and Health and Social Care Scrutiny Sub Committee to consider the future governance arrangements for the partnership.

Contact:

Leiann Bolton-Clarke / leiann.bolton-clarke@cityoflondon.gov.uk / 020 7332 3971